

BG96

CELLULAR REPLACEMENT MODULE



ETM-ADB-BG96 is a LTE Cat M1/Cat NB1/EGPRS cellular module with a board to board connector and a Quectel BG96 chipset . The ETM-ADB-BG96 is a pin and signal level compatible product with the Cinterion PH8, EU3, TC63i, TC65i and AC65i module.

It can act as a direct replacement in products designed for the above modules without any hardware changes. However, deviations in the command set may require software changes.

CINTERION COMPATIBLE REPLACEMENT MODULE WITH BG96 ON A CARRIER BOARD

FEATURES

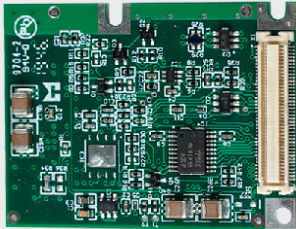
- No need for hardware redesign
- Same physical size as the Cinterion EU3/PH8
- GPS, GLONASS, BeiDou/Compass, Galileo, QZSS support
- LTE Cat M1/Cat NB1/EGPRS Module
- World wide bands

BENEFITS

- Compatible with Cinterion PH8/TC63i
- GNSS support
- LTE/UMTS/GPRS
- TCP/IP stack
- Board to board connector
- Level shifters on the signal lines



BOTH SIDES



The ETM-ADB-BG96 module is an industrial grade intelligent cellular LTE Cat M1/Cat NB1/EGPRS product designed for demanding surveillance and general communications applications.

SPECIFICATIONS

Model	ETM-ADB-BG96	
Module	Quectel BG96	
Access Technology	LTE Cat M1/Cat NB1/EGPRS	
Frequency	Cat M1/Cat NB1: B1/B2/B3/B4/B5/B8/B12/B13/B18/B19/B20/B25/B28 (B39 for Cat M1 Only) GSM/GPRS/EDGE: 850/900/1800/1900MHz	
Data Transmission	Cat M1	Max. 375 kb/s (DL), Max 375 kb/s (UL)
	Cat NB1	Max. 32 kb/s (DL), Max 70 kb/s (UL)
	EDGE	Max. 296 kb/s (DL), Max 236,8 kb/s (UL)
	GPRS	Max. 107 kb/s (DL), Max 85,6 kb/s (UL)
SMS	Yes	
TCP/IP	Yes	
I/O	No	
Voice	No	
Audio	No	
USB	USB 2.0	
Java	No	
Operating temp.	-30°C to +70°C	
Weight	Approx. 11 g	
Size	33,9 x 44,6 x 6,4 mm	
Certification	CE, RoHS	
Other	For a complete set of specification regarding the module, please see data sheet for BG96	
Your platform may not offer support for all described functionality - please contact us for technical qualification		

ETM Mätteknik AB (HQ)

Ekbacksvägen 32, 168 69, Bromma, Sweden
 Tel: +46 (0)8 25 28 75 E-mail: sales@etmiot.se
www.etmiot.se

ETM Pacific Pty Ltd (APAC)

Suite 6, 273 Alfred Street, North Sydney NSW 2060, Australia
 Tel: +61 (0)2 9956 7377 E-mail: sales@etmiot.com.au
www.etmiot.com.au

