



RUGGED, SECURE
LTE INDUSTRIAL
ROUTER



DIGI IX14

Cloud-managed networking for the Industrial IoT

Digi® IX14 is a rugged, secure and reliable LTE industrial router powered by an enhanced operating system that supports any utility or industrial application. Digi IX14 is ideal for connecting process automation controllers, telco infrastructure controllers, sensing equipment and remote data loggers.

Digi IX14 includes a one-year subscription to Digi Remote Manager® – a web-based device management platform that helps operators reduce costly downtime and service calls, and can increase revenue by bringing distributed sites online faster.

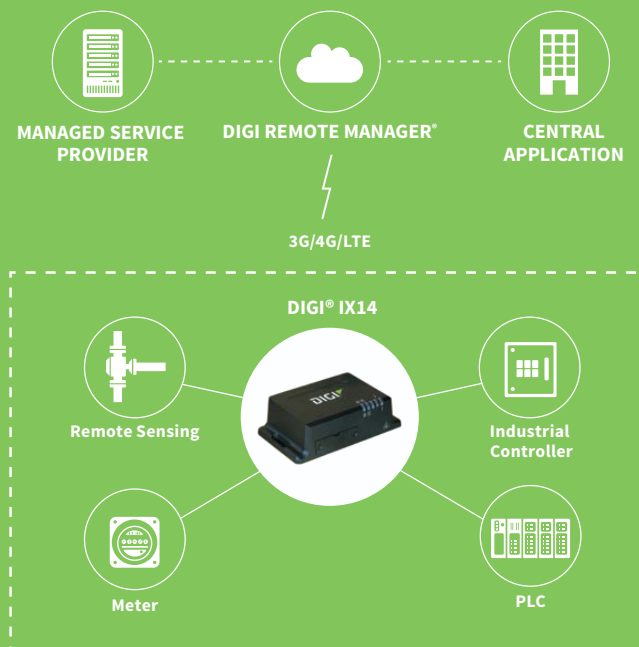
An intuitive user experience makes installation smooth and easy. Digi management solutions provide quick setup, configuration and maintenance of large installations of remote Digi routers and gateways, as well as third-party devices.

Leading edge scripting and custom business logic using Open Source Python 3.6 facilitates custom edge computing. Because many IoT devices are subject to attack, Digi TrustFence® security is built in to protect your investments far into the field.

FEATURES AND BENEFITS

- LTE Cat 1 with dual SIM for carrier failover and flexibility
- Single Ethernet and single serial (RS-232) port
- Flexible 9-30 VDC power input
- MIL-STD-810G certified for shock, vibration, temperature
- IP54 rated for dust and water resistance
- Includes one-year subscription to Digi Remote Manager® to deploy, monitor, manage and maintain a suite of routers
- TrustFence security: authenticated boot, dedicated security co-processor, encrypted data storage, unique default passwords and certificate management
- Digi Foundations™ 1-, 3- or 5-year subscription included

APPLICATION EXAMPLE



RELATED PRODUCTS



Digi TransPort
WR11 XT



Digi TransPort
WR31



Digi 6310-DX



Accessories



Digi Remote
Manager

SPECIFICATIONS

DIGI® IX14

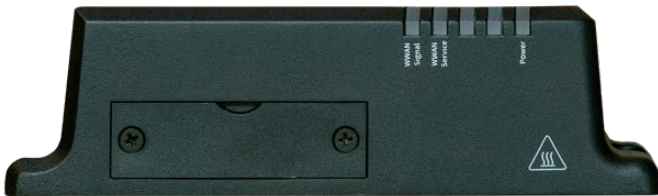
CELLULAR	
LTE – EMEA (L3)	LTE Cat 1 FDD: 700 (B28)/800 (B20)/900 (B8)/1800 (B3)/2100 (B1)/2600 (B7) 3G: 900 (B8)/1800 (B3)/2100 (B1) MHz 2G EDGE: 900 (B8)/1800 (B3) Transfer rate (max): 10 Mbps down, 5 Mbps up
LTE – EMEA (M3)	LTE Cat 1: 800 (B20)/900 (B8)/1800 (B3)/2100 (B1)/2600 (B7) 2G EDGE: 900/1800 MHz Transfer rate (max): 10 Mbps down, 5 Mbps up
LTE – UNITED STATES (M4)	LTE Cat 1: 700 (B12)/850 (B5,B26)/AWS (B4)/1900 (B2,B25) Transfer rate (max): 10 Mbps down, 5 Mbps up Approvals: Sprint
LTE – NORTH AMERICA (M6)	LTE Cat 1: 700 (B12,B13)/850 (B5)/AWS (B4)/1900 (B2) HSPA+: 850/1900 MHz Transfer rate (max): 10 Mbps down, 5 Mbps up Approvals: PTCRB, AT&T, Verizon
LTE – ANZ/LATAM (M9)	LTE Cat 1: 700 (B28)/850 (B5)/900 (B8)/1800 (B3)/2100 (B1) 3G HSPA+: 850/900/2100 MHz Transfer rate (max): 10 Mbps down, 5 Mbps up
CONNECTORS	
SIM SLOTS	(2) 50 Ω SMA (center pin: female)
SIM SECURITY	(2) Mini-SIM (2FF)
SIM SECURITY	Screw-down SIM cover
SOFTWARE AND MANAGEMENT	
REMOTE MANAGEMENT	Digi Remote Manager (one year included); SNMP v2/v3 (user installed/managed)
LOCAL MANAGEMENT	WebUI (HTTP/HTTPS); CLI (Telnet, SSH, SMS)
MANAGEMENT/ TROUBLESHOOTING TOOLS	FTP client, SCP; protocol analyzer with PCAP for Wireshark; event logging with Syslog and SMTP client; NTP/SNTP
MEMORY	50 MB RAM, 100 MB file space
ETHERNET	
PORTS	(1) RJ-45; 10/100 Mbps (auto-sensing)
SERIAL	
PORTS	(1) DB09M; RS-232 DTE SIGNAL SUPPORT TXD, RXD, RTS, CTS, DTR, DCD, DSR, RI software (XON/XOFF), hardware supported
PHYSICAL	
DIMENSIONS (L X W X H)	7.62 cm x 13.97 cm x 4.128 cm (3 in x 5.5 in x 1.625 in)
WEIGHT	.22 kg (0.5 lb)
STATUS LEDS	Power on, WWAN signal strength, WWAN service
ENCLOSURE	Die-cast aluminium / IP54
POWER REQUIREMENTS	
POWER INPUT	9-30 VDC, 9 W minimum power source required
POWER CONSUMPTION	3.0 W typical (Idle); 9 W typical (Peak Tx/Rx)
ENVIRONMENTAL	
OPERATING TEMPERATURE	-34° C to 74° C (-29.2° F to 165.2° F)
RELATIVE HUMIDITY	5% to 95% (non-condensing)
APPROVALS	
CELLULAR	PTCRB
SAFETY	UL 60950, CSA 22.2 No. 60950, EN60950, EN62368
ENVIRONMENTAL	MIL-STD-810G
EMISSIONS/IMMUNITY	CE, RED, FCC Part 15 Class B, AS/NZS CISPR 22, EN55024, EN55032
WARRANTY	
PRODUCT WARRANTY	3-year product warranty (1-year Digi Foundations included)*

*Digi Foundations extends the standard three-year warranty to a Limited Lifetime Warranty that provides replacement with a new or similar Digi product for a period of five years from the date of purchase. After five years from the purchase date, the warranty value will revert to a 40 percent credit towards the MSRP of an equivalent product from Digi.

ENTERPRISE SOFTWARE	DESCRIPTION
PROTOCOL SUPPORT	HTTP, HTTPS, FTP client, SSL, TLS v1.2, SCP (client and server), SFTP, SMTP client for use by scripts and the command line, SNMP (v2/v3), SSH; remote management via Digi Remote Manager; Protocol analyzer, ability to capture PCAP for use with Wireshark; DynDNS; Dynamic DNS client compatible with BIND9/No-IP/DynDNS; Captive portal, Intelliflow
SECURITY/VPN	IP filtering, stateful firewall, custom firewall rules (iptables), address and port translation; VPN: IPsec with IKEv1, IKEv2, NAT Traversal; SSL, SSLv2, SSLv3, FIPS 197, open VPN client and server; VPN tunnels; Cryptology: SHA-256/384/512, MD5, RSA; Encryption: DES, 3DES and AES up to 256-bit (CBC mode for IPsec); Authentication: RADIUS, TACACS+; certificates; MAC address filtering; VLAN support
ROUTING/FAILOVER	IP pass-through; NAT, NATP with IP port forwarding; Ethernet bridging; GRE; Multicast routing; Routing protocols: RIP (v1, v2) OSPF, BGP; IP failover: VRRP; automatic failover, SureLink
OTHER PROTOCOLS	DHCP; Dynamic DNS client compatible with No-IP/DynDNS

PRODUCT IMAGES

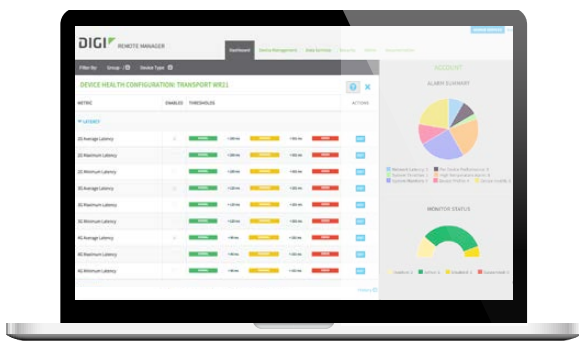
FRONT



BACK



DIGI REMOTE MANAGER®



- One year of Digi Remote Manager included with purchase of Digi IX14

INFRASTRUCTURE

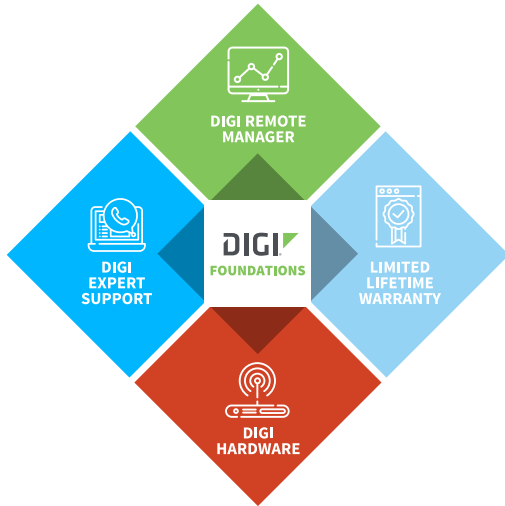
- Hosted in a commercial-grade SAS 70-certified environment
- Superior availability, operating to 99.9% or greater
- Open APIs available to support application development

CAPABILITIES

- Centralized management of remote devices over 3G/4G/LTE
- Define standard configurations and automatically monitor individual devices for PCI security compliance
- Report and alert on performance statistics, including connection history, signal quality, latency, data usage and packet loss
- No servers or applications to operate and maintain
- Complete tasks for your entire device network in minutes
- Edit configurations and update firmware for your individual devices or groups
- Monitor the status and location of your remote device via a web browser
- Active or deactivate cellular lines and monitor data to ensure you never incur overage charges

SECURITY

- Certified SSAE-16 facilities
- Over 175 security controls in place to protect your data
- Enables compliance with security frameworks like PCI, HIPAA, NIST and more
- Earned SkyHigh's Cloud Trust Program highest ranking of Enterprise-Ready



IT'S TIME TO CONNECT WITH CONFIDENCE

The convenient, comprehensive and secure way to integrate IoT communications hardware, device management software, global support and lifetime warranty protection into a connectivity solution to simplify your IoT network growth.

- [Digi Remote Manager®](#) (DRM) gives you a single point of contact, command and control with sophisticated remote device monitoring and management tools.
- [Digi Expert Support](#) is available around the clock, seven days a week, around the world with experts ready to provide technical support by phone, email or online.
- [Digi Limited Lifetime Warranty](#) lowers the total cost of ownership with hardware protection and equipment upgrades to expand your network as needs evolve.

Digi Foundations, with DRM, simplifies network and device management – for hundreds or hundreds-of-thousands of Digi or third-party devices – with options to upgrade as technology evolves. Isn't it time you got better connected?

For more information visit: digi.com/foundations

PART NUMBERS*	DIGI IX14
IX14-L301	Digi IX14 - 4G LTE Cat 1 EMEA, single Ethernet, DB-9 RS-232, includes 1-year, 3-year or 5-year subscription to Digi Foundations
IX14-M301	Digi IX14 - 4G LTE Cat 1 EMEA, single Ethernet, DB-9 RS-232, includes 1-year, 3-year or 5-year subscription to Digi Foundations
IX14-M401	Digi IX14 - 4G LTE Cat 1 Sprint, single Ethernet, DB-9 RS-232, includes 1-year, 3-year or 5-year subscription to Digi Foundations
IX14-M601	Digi IX14 - 4G LTE Cat 1 North America, single Ethernet, DB-9 RS-232, includes 1-year, 3-year or 5-year subscription to Digi Foundations
IX14-M901	Digi IX14 - 4G LTE Cat 1 AU/NZ, single Ethernet, DB-9 RS-232, includes 1-year, 3-year or 5-year subscription to Digi Foundations

*Includes your choice of 1-year, 3-year or 5-year subscription to Digi Foundations; note that you must add one of the following SKUs to your order: DGF-BDL-STAN-1YR, DGF-BDL-STAN-3YR, or DGF-BDL-STAN-5YR.

PART NUMBERS	ACCESSORIES
76002080	Digi IX14 accessory kit - Digi IX14 standard temp power supply, LTE antennas, Ethernet cable, US/EU power plugs
76002081	Digi IX14 accessory kit - Digi IX14 extended temp power supply, LTE antennas, Ethernet cable, US/EU/UK/AU power plugs
76002078	AC power supply - Digi IX14 standard temp power supply, US/EU power plugs
76002079	AC power supply - Digi IX14 extended temp power supply, US/EU/UK/AU power plugs
76000926	Antenna - cellular, 3G/4G/LTE

DIGI SERVICE AND SUPPORT / You can purchase with confidence knowing that Digi is always available to serve you with expert technical support and our industry leading warranty. For detailed information visit www.digi.com/support.

© 1996-2019 Digi International Inc. All rights reserved.
All trademarks are the property of their respective owners.

DIGI INTERNATIONAL WORLDWIDE HQ
877-912-3444 / 952-912-3444 / www.digi.com

DIGI INTERNATIONAL GERMANY
+49-89-540-428-0

DIGI INTERNATIONAL JAPAN
+81-3-5428-0261 / www.digi-intl.co.jp

DIGI INTERNATIONAL SINGAPORE
+65-6213-5380

DIGI INTERNATIONAL CHINA
+86-21-50492199 / www.digi.com.cn